

Slant/Fin®

Revital/Line™

Aluminum Baseboard Replacement Cover

*Presenting the quick and easy makeover
for your aging baseboard covers!*

- **EASY! EASY!**
No Tools Needed for
Most Installations
- Fits Over Existing Back Panel
- Laboratory Tested for
Maximum Heat Output
- Powder-coated for a Durable,
Baked Enamel-like Finish
- Standard Color is Brite White.
Also available in 8 other
Decorator Colors
- Available in 8 sizes:
2ft•3ft•3.5 ft•4ft•5ft•6ft•7ft•8ft

MADE WITH DURABLE
RUST-PROOF
EXTRUDED ALUMINUM

***Revital/Line fits over 90% of all brands
of standard residential baseboard...
Ours and theirs! (8.5" H x 3" D)***

 **Made from Recycled Aluminum!**


Slant/Fin®
BOILERS & BASEBOARD
We Build Trust and Comfort

From the World's Leader in Baseboard Heaters Since 1949 • www.slantfin.com

Slant/Fin

Revital/Line™

Aluminum Baseboard Replacement Cover

Slant/Fin's Revital/Line pre-cut replacement covers will fit standard hydronic baseboard up to 8.5" H x 3" D. Simply measure your current baseboard, choose your color, and you're ready to begin. This product is designed to snap right over existing back panel. All you do is remove the old accessories, front panel and damper and you're ready to slip on the new cover. Visit www.slantfin.com to learn more and see a quick installation video.

The unique and modern design will provide durability and has been tested to provide up to 40% more heat output than the competitive brands currently in the market. It's amazing how simple it is to transform the look of any room. And, best of all, anyone can do it! Slant/Fin takes the guesswork out of it...and puts our unsurpassed quality into...every Revital/Line makeover.



Breathe new life into your aging baseboard!

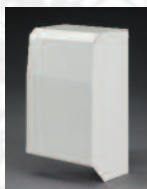
Revitalize any room in your home... quickly and easily... with a pre-cut, snap-in-place baseboard cover.

Decorator Colors
BASEBOARD • COMMERCIAL FIN-TUBE
ALUMINUM REPLACEMENT COVERS

Available in nine decorator colors!



Brite White



Nu-White



Mirror Black



Shell White



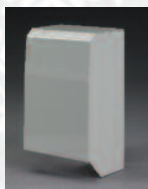
Flat Black



Rubbed Bronze



Almond



Cloud Gray



Mineral Bronze

Colors shown here are matched to actual colors as close as possible. Slight variations can occur in printed material and on computer screens. Color chips are available upon request.

Accessories



Filler Sleeve
RVTL FS 2"
RVTL FS 4"
RVTL FS 7"
RVTL FS 14"

One piece filler sleeve
covers gaps from 1" to 13"



Inside Corner 90°
RVTL IC-90
3-3/4" wide at top



End Plate
RVTL End Plate

To seal the end
with a flat finish.
(screws included)



**4" Non-Hinged
End Cap**

RVTL LEC 4"
RVTL REC 4"

Telescoping design allows
for 3" adjustment.

Revital/Line Replacement Covers is for use with hydronic baseboard only.



©Slant/Fin Corp. 2018 • Printed in U.S.A. 0118 • Publication No. RVTL-10

SLANT/FIN CORPORATION, Greenvale, N.Y. 11548 • Phone: (516) 484-2600
FAX: (516) 484-0933 • Canada: Slant/Fin LTD/LTEE, Mississauga, Ontario

www.slantfin.com

